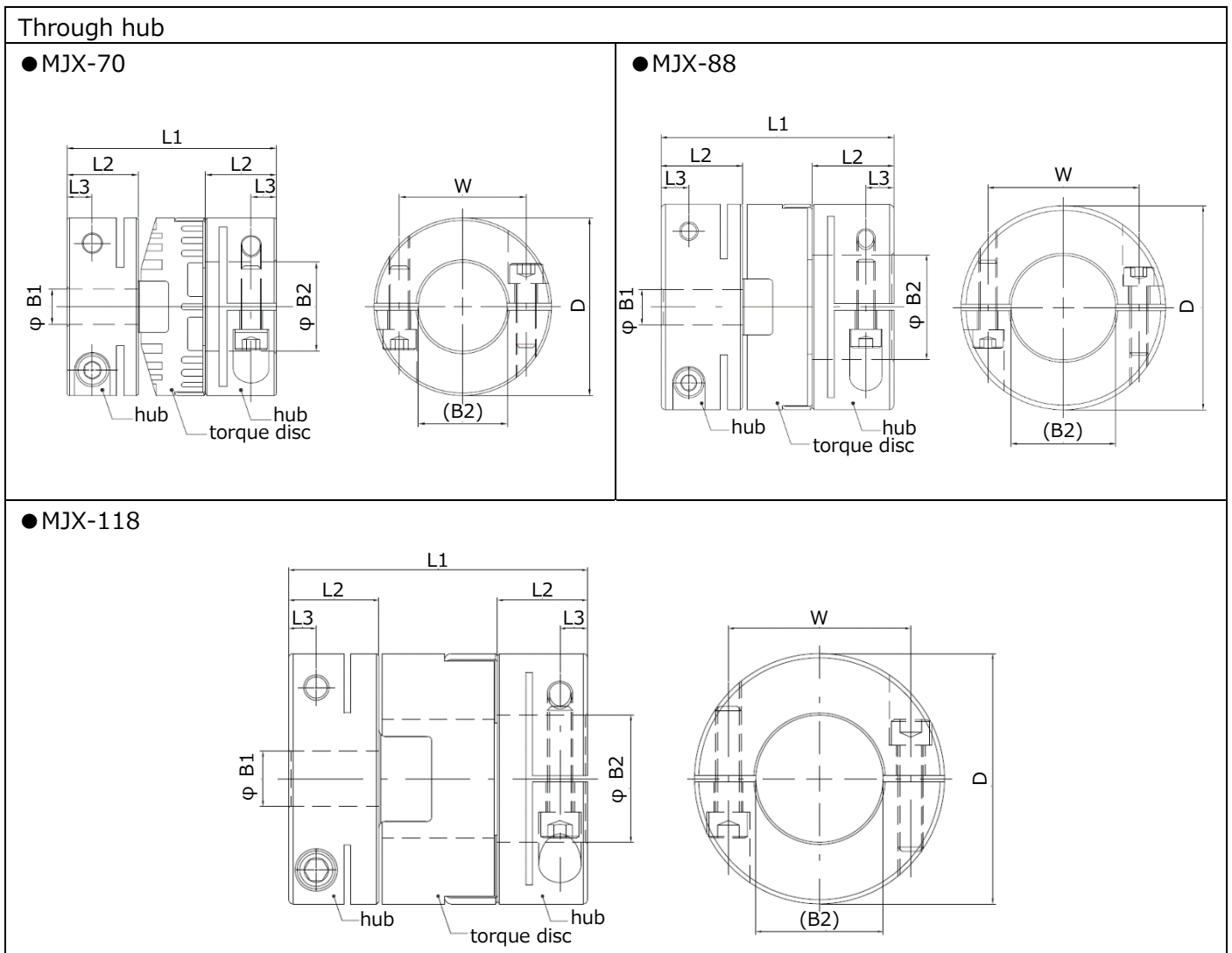


MJX type

- Double clamp style
- Zero backlash
- **Maximum lateral misalignment: 8 - 10 mm**
- Inner diameter: 14 - 60 mm
- Maximum transmittable torque: 117 - 400 Nm
- Compatible for heavy industry



- A coupling consists of two hubs and one torque disc.

Service Factors

Select a size of coupling where the maximum transmittable torque* exceeds the
 "Maximum application torque × Service factor."

Load	Service factors
Uniform, steady state	1
Non-uniform, periodical, stop/start, reversing	2
Shock	3
Heavy shock, repeated impulsive, reversing	4
Servomotor	2.5 - 3.0

Specifications of MJX type

MJX			Coupling size of MJX-		
			70	88	118
Maximum transmittable torque*		Nm	117	210	400
Torsional stiffness	Static strength	Nm	266.7	540.0	1,981
	Spring constant	Nm/rad.	2,265	2,775	6,837
Maximum compressive load		N	1,000	1,200	1,500
Electrical isolation between shafts		kV DC	35	40	40
Moment of inertia (Values apply with maximum bores)		kgm ² ×10 ⁻⁴	4,141	12,450	57,435
Misalignment	Angular	°	1		
	Lateral	mm	8	10	
	Axial		0.8		2
Clearance between hub and torque disc**		mm	0.4		1
Mass (Values apply with maximum bores)		kg×10 ⁻³	650	1,250	2,620
Outer diameter	D	mm	70	88	118
Overall length	L1	mm	82.6	100	141
Mounting length (shaft depth, bore depth) ***	L2	mm	28	35	42.5
Distance	from hub end	L3	mm	10	12
	from screw to screw	W		50	65
Cap screws****	Size		M8		M12
	Recommended tightening torque	Nm	32.3		130
Inner dia. (see tbl below)	Metric (min - max)	B1, B2	mm	14-40	15-50
Torque disc	Blank disc		standard		
	Thro' disc (TB)		make to order		

** Please make clearance 0.4 - 1.0 mm between torque disc and hub respectively. The clearance absorbs axial misalignment and thermal expansion of shaft.

*** Shafts must not penetrate beyond L2 when installation.

**** Steel screws are standard, stainless steel screws are option.

Bores for MJX type

Inner diameter			Coupling size of MJX-		
			70	88	118
B1, B2 (G6 [mm])	Metric [mm]	14	○		
		15	○	○	
		16	○	○	
		17	○	○	
		18	○	○	
		19	○	○	
		20	○	○	
		22	○	○	
		23	○	○	
		24	○	○	
		25	○	○	
		26			○
		28	○	○	○
		30	○	○	○
		32	○	○	○
		34	○	○	○
		35	○	○	○
		36	○	○	○
		38	○	○	○
		40	○	○	○
		42		○	○
		45		○	○
		46		○	○
		48		○	○
		50		○	○
		52			○
		55			○
		56			○
		58			○
		60			○

○Through hubs

Ordering Example

Type	-	Coupling size	-	Inner diameter, small	x	Inner diameter, large
MJX	-	88	-	15	x	50

Please email us for further assistance: product@mighty-corp.co.jp