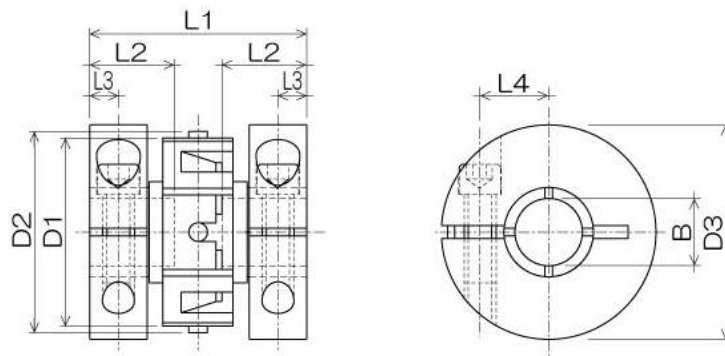


MLC type

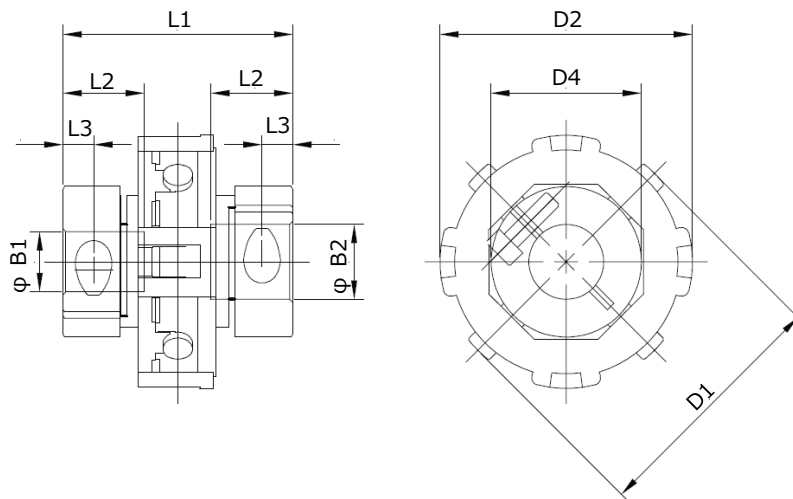
- **Clamp style**
- Zero backlash
- **Angular and lareral misalignment compensation**
- Inner diameter: 3 - 12 mm
- Maximum transmittable torque: 0.3 - 3.5 Nm



● MLC-18, -27



● MLC-33, -41



- MLC type is all through bored.

Service Factors

Select a size of coupling where the maximum transmittable torque* exceeds the
 "Maximum application torque × Service factor."

Load	Service factors
Uniform, steady state	1
Non-uniform, periodical, stop/start, reversing	2
Shock	3
Heavy shock, repeated impulsive, reversing	4
Servomotor	2.5 - 3.0

Specifications of MLC type

MLC			Coupling size of MLC-				
			18	27	27**	33	41
Maximum transmittable torques*		Nm	0.3	1.7	0.9	2.5	3.5
Torsional stiffness	Static strength	Nm	0.9	5.0	2.9	7.5	10.5
	Spring constant	Nm/rad.	25	92	60	146	299
Axial	maximum loading	N	19	31		34	39
	stiffness	N/mm	155	350		300	250
Electrical isolation between shafts (Values apply when offset ≤5°)		kV DC	3				
Moment of inertia (Values apply with maximum bores)		kgm ² ×10 ⁻⁸	55	220		183	550
Misalignment	Angular	°	5			10	
	Lateral	mm	1.3				
Mass (Values apply with maximum bores)		kg×10 ⁻³	11	26		20	40
Outer diameter	Torque ring	D1	18.0	27.2		33.7	41.4
	Pivot pin	D2	18.0	28.0		33.3	41.3
	Clamp ring	D3	19.1	25.4		-	-
	Hub	D4	-	-		20.1	24.2
Overall length		L1	19.1	25.4		30.7	38.1
Mounting length*** (shaft depth, bore depth)		L2	7.0	9.3		10.9	13.5
Distance	from hub end to screw	L3	2.5	3.4		4.1	4.8
Cap screws****	Size		M2.5	M3		M2.5	M4
	Recommended tightening torque	Nm	1.32	2.21		1.32	5.06

** When the inner diameter is 9 mm or more.

*** Shafts must not penetrate beyond L2 when installation.

**** Steel screws are standard, stainless steel screws are optional.

Bores for MLC type

Inner diameter			Coupling size of MLC-				
			18	27	27**	33	41
B1, B2 (+0.03/ 0 [mm])	Metric [mm]	3	○				
		4	○	○			
		4.5	○	○			
		5	○	○		○	
		6	○	○		○	○
		7		○		○	○
		8		○		○	○
		9			○	○	○
		9.5			○	○	○
		10			○	○	○
		11					○
		12					○
	Inch [in]	1/8	○				
		3/16	○	○			
		1/4	○	○		○	○
		5/16		○		○	○
		3/8			○	○	○
		1/2					○

○through hubs

Ordering Example

Type	-	Coupling size	-	Inner diameter, small	×	Inner diameter, large
MLC	-	41	-	6	×	12