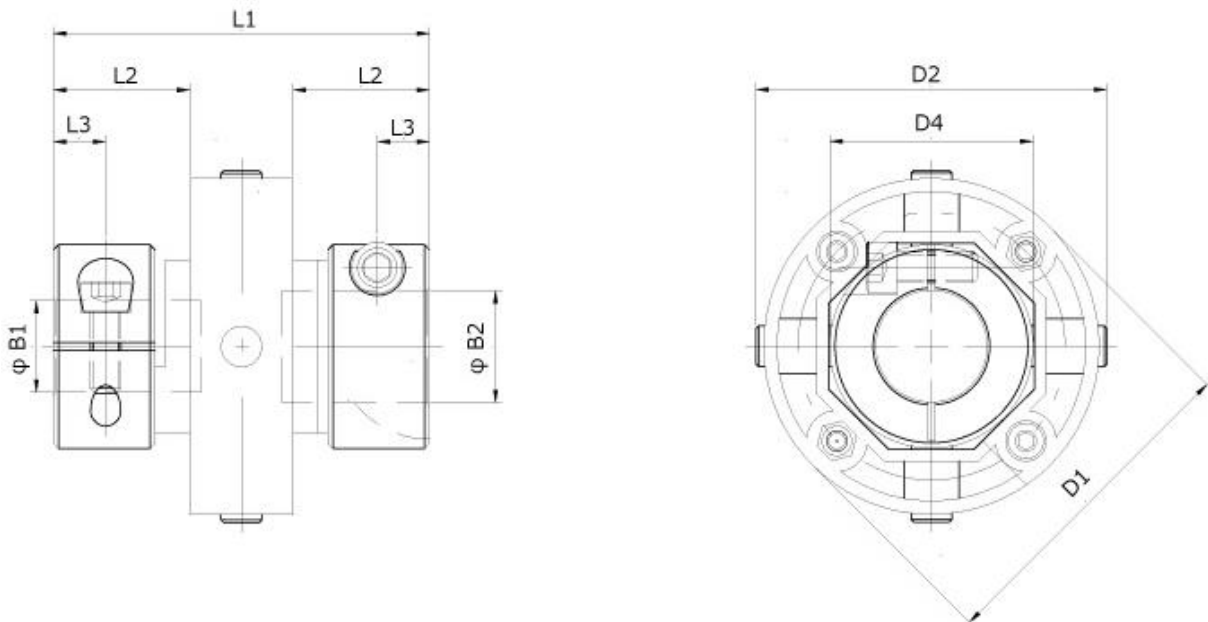


MLXC type

- **Clamp style**
- **The biggest size in ML series**
- Zero backlash
- **Angular and lateral misalignment compensation**
- Inner diameter: 8 - 22 mm
- **Maximum transmittable torque: 12 Nm**



● MLXC-70



- MLXC type is all through bored.
- Key way is available.

Service Factors

Select a size of coupling where the maximum transmittable torque exceeds* the
 "Maximum application torque × Service factor."

| Load | Service factors |
|--|-----------------|
| Uniform, steady state | 1 |
| Non-uniform, periodical, stop/start, reversing | 2 |
| Shock | 3 |
| Heavy shock, repeated impulsive, reversing | 4 |
| Servomotor | 2.5 - 3.0 |

Specifications of MLXC type

| MLXC | | | Coupling size |
|--|-------------------------------|-------------------------------|---------------|
| | | | MLXC-70 |
| Maximum transmittable torques* | | Nm | 12 |
| Torsional stiffness | Static strength | Nm | 68 |
| | Spring constant | Nm/rad. | 1,300 |
| Axial | maximum loading | N | 75 |
| | stiffness | N/mm | 540 |
| Electrical isolation between shafts (Values apply when offset $\leq 5^\circ$) | | kV DC | 3 |
| Moment of inertia (Values apply with maximum bores) | | $\text{kgm}^2 \times 10^{-8}$ | 7,315 |
| Misalignment | Angular | ° | 2 |
| | Lateral | mm | 1.0 |
| Mass (Values apply with maximum bores) | | $\text{kg} \times 10^{-3}$ | 190 |
| Outer diameter | Torque ring | D1 | 66.0 |
| | Pivot pin | D2 | 69.0 |
| | Hub | D4 | 40.0 |
| Overall length | | L1 | 74.0 |
| Mounting length (shaft depth, bore depth)** | | L2 | 29.0 |
| Distance | from hub end to screw | L3 | 10.3 |
| Cap screws*** | Size | | M6 |
| | Recommended tightening torque | Nm | 15.82 |

** Shafts must not penetrate beyond L2 when installation.

*** Steel screws are standard, stainless steel screws are option.

Bores for MLXC type

| Inner diameter | | | Coupling size | |
|---------------------------|-------------|----|---------------|--|
| | | | MLXC-70 | |
| B1, B2 (+0.03/ 0 [mm]) | Metric [mm] | 8 | ○ | |
| | | 9 | ○ | |
| | | 10 | ○ | |
| | | 11 | ○ | |
| | | 12 | ○ | |
| | | 13 | ○ | |
| | | 14 | ○ | |
| | | 15 | ○ | |
| | | 16 | ○ | |
| | | 17 | ○ | |
| | | 18 | ○ | |
| | | 19 | ○ | |
| | | 20 | ○ | |
| | | 22 | ○ | |

○through hubs

Ordering Example

| Type | - | Coupling size | - | Inner diameter, small | × | Inner diameter, large |
|------|---|---------------|---|--------------------------|---|--------------------------|
| MLXC | - | 70 | - | 8 | × | 22 |

- When requesting key way processing, please indicate in the purchase order.